



# MONTHLY MEMBERSHIP PROGRESS REPORT

District 118 U

Results as of: 03/31/2019

GMT: JOOST PAIJMANS

LOCATION TURKEY

GMT CA

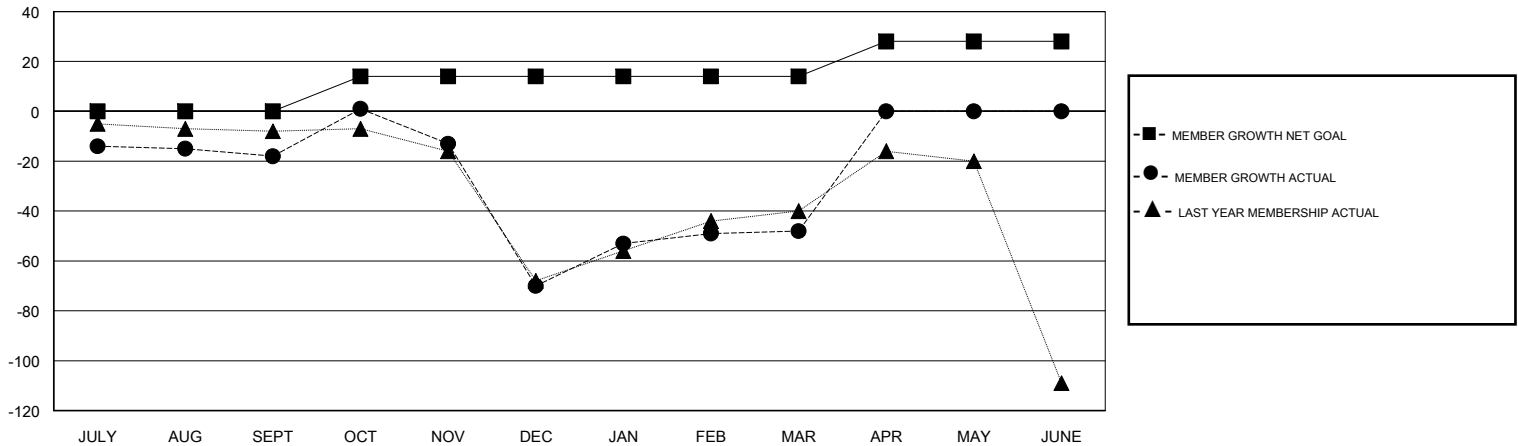
Clubs			
RESULTS FOR 2018-2019			
QUARTER	NEW CLUB GOAL	NEW CLUBS	DROPPED CLUBS
JULY/AUG/SEPT	0	0	2
OCT/NOV/DEC	1	0	2
JAN/FEB/MAR	0	0	0
APR/MAY/JUNE	1	0	0

Members			
RESULTS FOR 2018-2019			
QUARTER	MEMBER GROWTH NET GOAL	MEMBER GROWTH ACTUAL	DROPPED MEMBERS ACTUAL (including transfers)
JULY/AUG/SEPT	0	6	23
OCT/NOV/DEC	14	31	77
JAN/FEB/MAR	0	37	12
APR/MAY/JUNE	14	0	0

GOALS AND ACTUAL NEW CLUBS CUMULATIVE



GOALS AND ACTUAL MEMBERS CUMULATIVE



DROPPED CLUBS: 4	29 CLUBS OF 64 ADDED 1 OR MORE NEW MEMBERS	<u>GENDER DISTRIBUTION</u> MALE 437 (40.24%) FEMALE 649 (59.76%) Women Percentage Fiscal Year Goal: 55%
<u>DROPPED MEMBERS</u> DECEASED 5 CLUB CANCELLED 19 OTHER 88 TOTAL 112	<a href="#">CLICK HERE FOR CUMULATIVE MEMBERSHIP DATA</a>	TOTAL FAMILY UNIT MEMBERS 42 FAMILY MEMBERS PAYING HALF DUES 21